 Specifications and technical data are subject to change without notice.  
Please contact us to confirm relevant information on ordering.



CONTROL ELECTRIC

Copy right reserved EBS.NO.2016003



**Shanghai Ebasee Electric Co., Ltd**

Add:No.18, Gutang Rd,Shanghai 201209, China  
Tel: +86 21 5032 0898  
Fax: +86 21 5032 0828  
[http:// www.ebasee.com](http://www.ebasee.com)



APP

**Ebasee**  
Smart Living Green Ebasee  
**Ebasee Ltd.,China**

## Company Profile

As a leading supplier in the low voltage electrics industry, Shanghai Ebasee Electric Co., Ltd. products have been used for residential, commercial and industrial applications with its quality and service. EBASEE brand is recognized for its quality and reliability in an ever-increasing number of markets worldwide. So far EBASEE products have gained many international approvals, such as **TUV, KEMA, CB, SEMKO, RoHS, CE, and CCC** etc.

With quality raw materials and components supply, all products are manufactured to EBASEE's defined specifications. We have 4 semi-auto production lines, up to date quality control facilities, and well-trained skillful workers. Moreover, with a technical R & D team and fully equipped in-house laboratory, EBASEE factory can carry out efficient new products developing and daily production QC as well.

EBASEE have wide range cooperations with world leading companies in new products developing or OEM, ODM cooperation. Meanwhile we also process industry cooperation on intelligent home products, and work with some university such as Xi'an Jiao Tong University on project solutions. EBASEE is focused on achieving growth through the growth and success of its worldwide partners.

EBASEE, guided by the "market-oriented" philosophy, powered with the "Quick response and flexible supply" capability, can support our worldwide partners to compete against established global players to deliver the most comprehensive and cost-effective products and service in the market.

"Smart life, Green EBASEE"



## Enterprise credit



# NH Series

## Low Voltage H.R.C Fuse Links



### Application

"This fuse series apply to AC 50Hz, rated voltage to 1140V and rate current to 1250A. It is mainly used for overload and short circuit protection" in electrical devices. It can break any current during the minimum melting current to 120kA reliably, and also be derived for semiconductor devices Its complete sets of equipment of short circuit protection (aR) and motor short circuit protection (aM).

This series fuse conforms to IEC60269

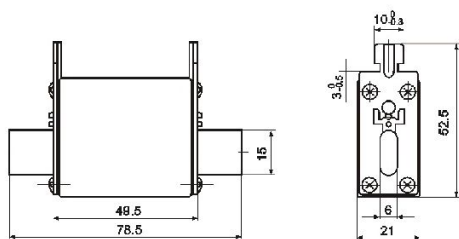
### Structure Feature

Variable cross-section fuse element made from pure copper or silver sealed in cardge made from high-duty ceramic. Fuse tube filld with chemically treated hi-purity quartz sand as arc-extinguishing medium. Dot-welding of fuse element ends to the terminals ensures reliable electric connection and forms insert knife type contacts. Indicator or striker may be attached to the fuse link to show cutout of fuse or to give various signals and to cut the circuit automatically.

### Basic Data 1

Cat. NO.	Model of fuse link				Rated voltage (v)	Rated current (A)	Weight (g)	See figure	Dimensions/sizes (mm)
	The company		Domestic and similar products						
	General (gG)	Quick speed (aR)	General (gG)	Quick speed (aR)					
0201	NH00C	—	—	—	500/660	4~100	132	1.1	Refer to drawing1.1 for detailed data

### Product photo and Dimension

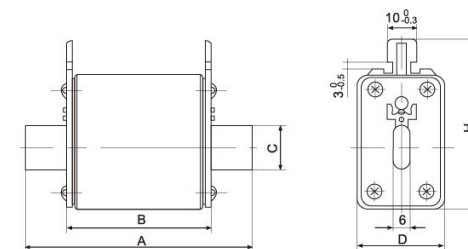


Drawing 1.1

### Basic Data 2

Cat. NO.	Model of fuse link				Rated voltage (v)	Rated current (A)	Weight (g)	See figure	Dimensions/sizes (mm)				
	The company		Domestic and similar products										
	General (gG)	Quick speed (aR)	General (gG)	Quick speed (aR)					A	B	C	D	H
0202	NH00	RS31	—	—	500/660	10~160	180	1.2	78	50.5	15	30	60
0203	NH0	—	—	—	500/660	6~160	267	1.2	125	67	15	30	60

### Product photo and Dimension

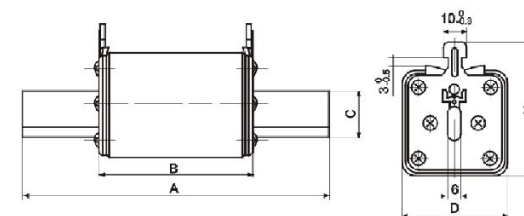


Drawing 1.2

### Basic Data 3

Cat. NO.	Model of fuse link				Rated voltage (v)	Rated current (A)	Weight (g)	See figure	Dimensions/sizes (mm)				
	The company		Domestic and similar products										
	General (gG)	Quick speed (aR)	General (gG)	Quick speed (aR)					A	B	C	D	H
0204	NH1	RS32	—	—	500/660	32~250	447	1.3	135	67	20	46	58.5
0205	NH2	RS33	—	—	500/660	80~400	727	1.3	150	68	30	58.5	68.5
0206	NH3	RS34	—	—	500/660	160~630	975	1.3	150	68	36	70	82

### Product photo and Dimension

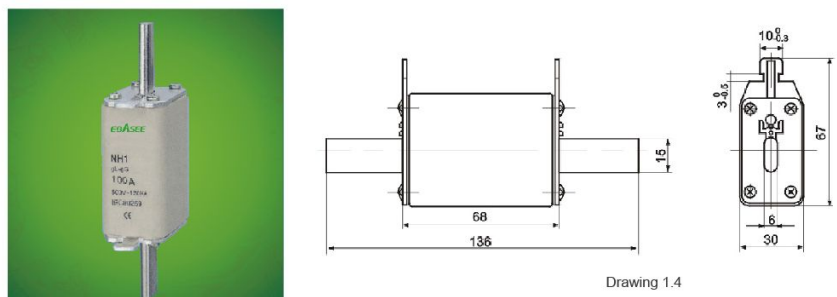


Drawing 1.3

**Basic Data 4**

Cat. NO	Model of fuse link				Rated voltage (v)	Rated current (A)	Weight (g)	See figure	Dimensions/sizes (mm)
	The company		Domestic and similar products						
	General (gG)	Quick speed (aR)	General (gG)	Quick speed (aR)					
0207	NH1 (Small volume)	—	—	—	500/660	16~160	300	1.4	Refer to drawing 1.4 for detailed data

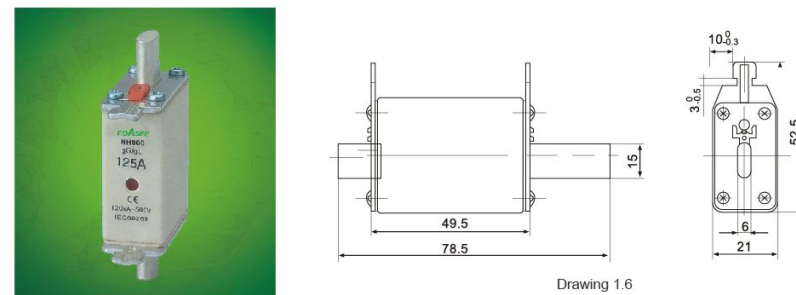
**Product photo and Dimension**



**Basic Data 6**

Cat. NO	Model of fuse link				Rated voltage (v)	Rated current (A)	Weight (g)	See figure	Overall dimension(mm)
	The company		Domestic and similar products						
	General (gG)	Quick speed (aR)	General (gG)	Quick speed (aR)					
0210	NH00S	—	—	—	500/660	4~100	132	1.6	Refer to drawing 1.6 for detailed data

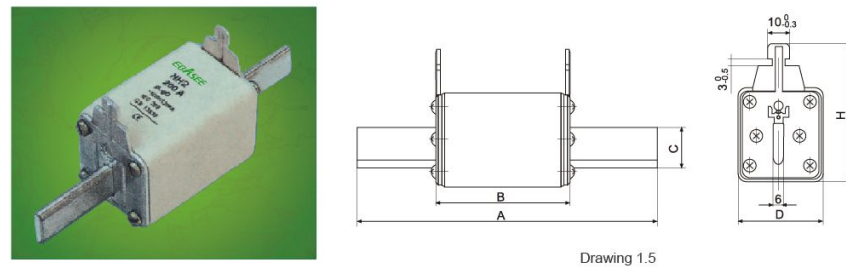
**Product photo and Dimension**



**Basic Data 5**

Cat. NO	Model of fuse link				Rated voltage (v)	Rated current (A)	Weight (g)	See figure	Overall dimension (mm)				
	The company		Domestic and similar products						A	B	C	D	H
	General (gG)	Quick speed (aR)	General (gG)	Quick speed (aR)									
0208	"NH2 (Small volume)"	—	—	—	500/660	35~250	450	1.5	150	67	20	46	67
0209	"NH3 (Small volume)"	—	—	—	500/660	200~400	727	1.5	150	67	30	58.5	81.5

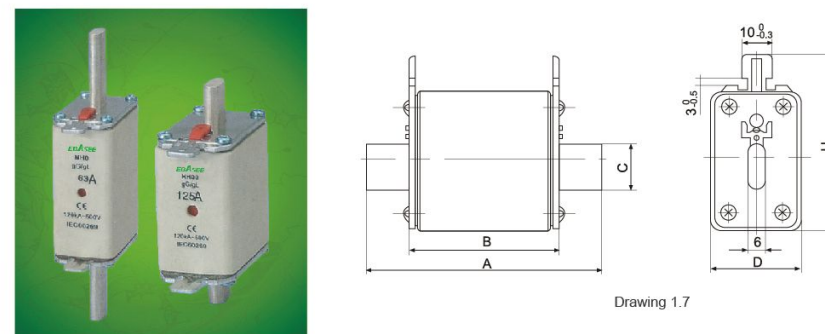
**Product photo and Dimension**



**Basic Data 7**

Cat. NO	Model of fuse link				Rated voltage (v)	Rated current (A)	Weight (g)	See figure	Overall dimension(mm)				
	The company		Domestic and similar products						A	B	C	D	H
	General (gG)	Quick speed (aR)	General (gG)	Quick speed (aR)									
0211	NH00S	—	—	—	500/690	10~160	180	1.7	78	50.5	15	30	60
0212	NH0S	—	—	—	500/690	6~160	267	1.7	125	67	15	30	60

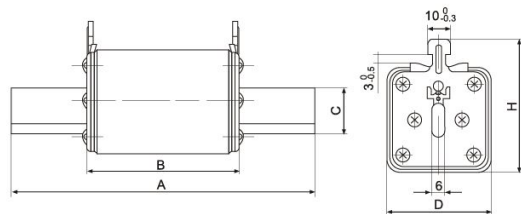
**Product photo and Dimension**



**Basic Data 8**

Cat. NO.	Model of fuse link				Rated voltage (V)	Rated current (A)	Weight (g)	See figure	Overall dimension(mm)				
	The company		Domestic and similar products						A	B	C	D	H
	General (gG)	Quick speed (aR)	General (gG)	Quick speed (aR)									
0213	NH1S	—	—	—	500/660	32-250	447	1.8	135	67	20	40	64
0214	NH2S	—	—	—	500/660	80-400	727	1.8	150	68	30	54	74
0215	NH3S	—	—	—	500/660	160-630	975	1.8	150	68	36	70	88

**Product photo and Dimension**



Drawing 1.8

**Characteristic Curve**

